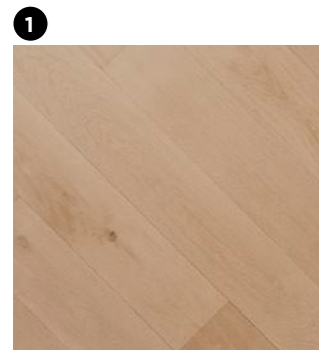
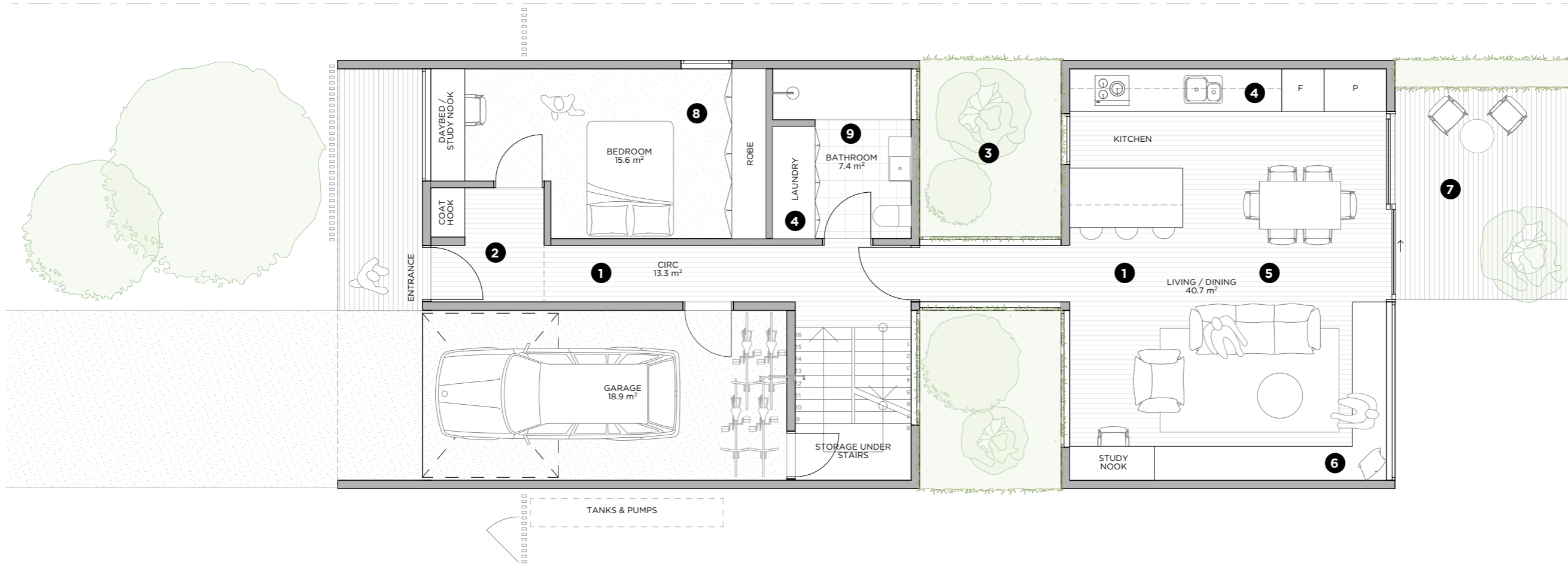


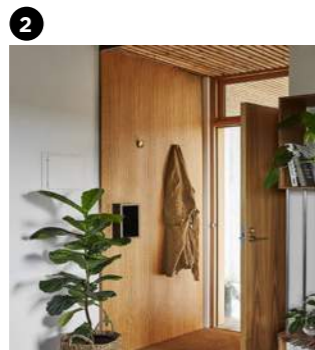
Up and Down - Ground Floor Plan

Double storey - 3 bed

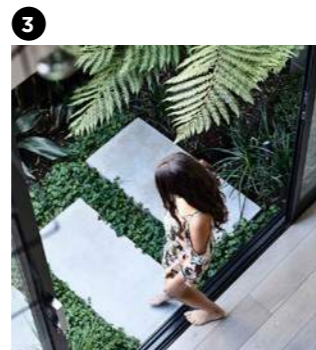
Total area - 180m²



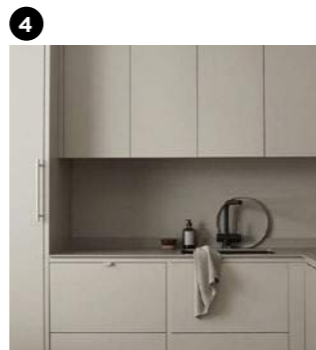
1 Engineered timber flooring



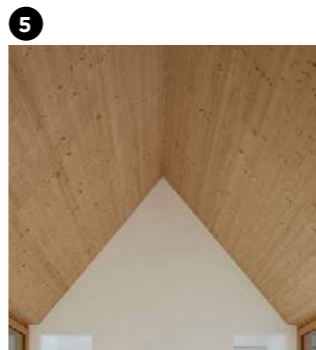
2 Timber lined entrance



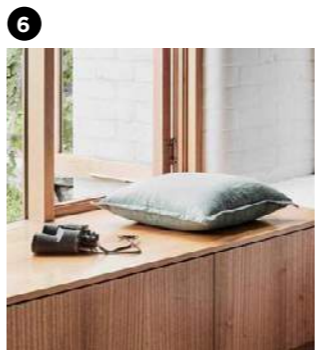
3 Lush green lightcourts



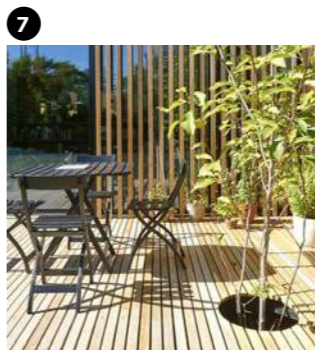
4 Solid colour laminate joinery



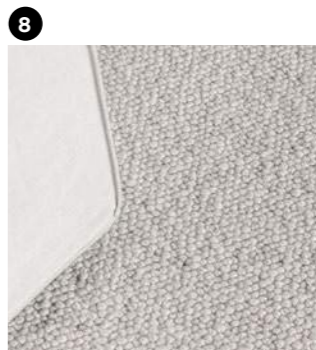
5 Timber lined ceiling in living & kitchen



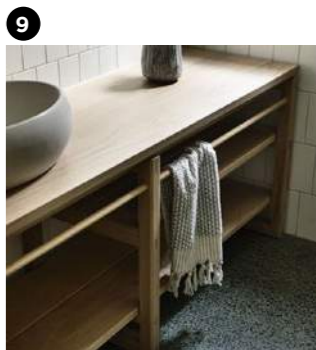
6 Window seats in living room



7 Outdoor decking with tree cut-out



8 Carpet to bedrooms

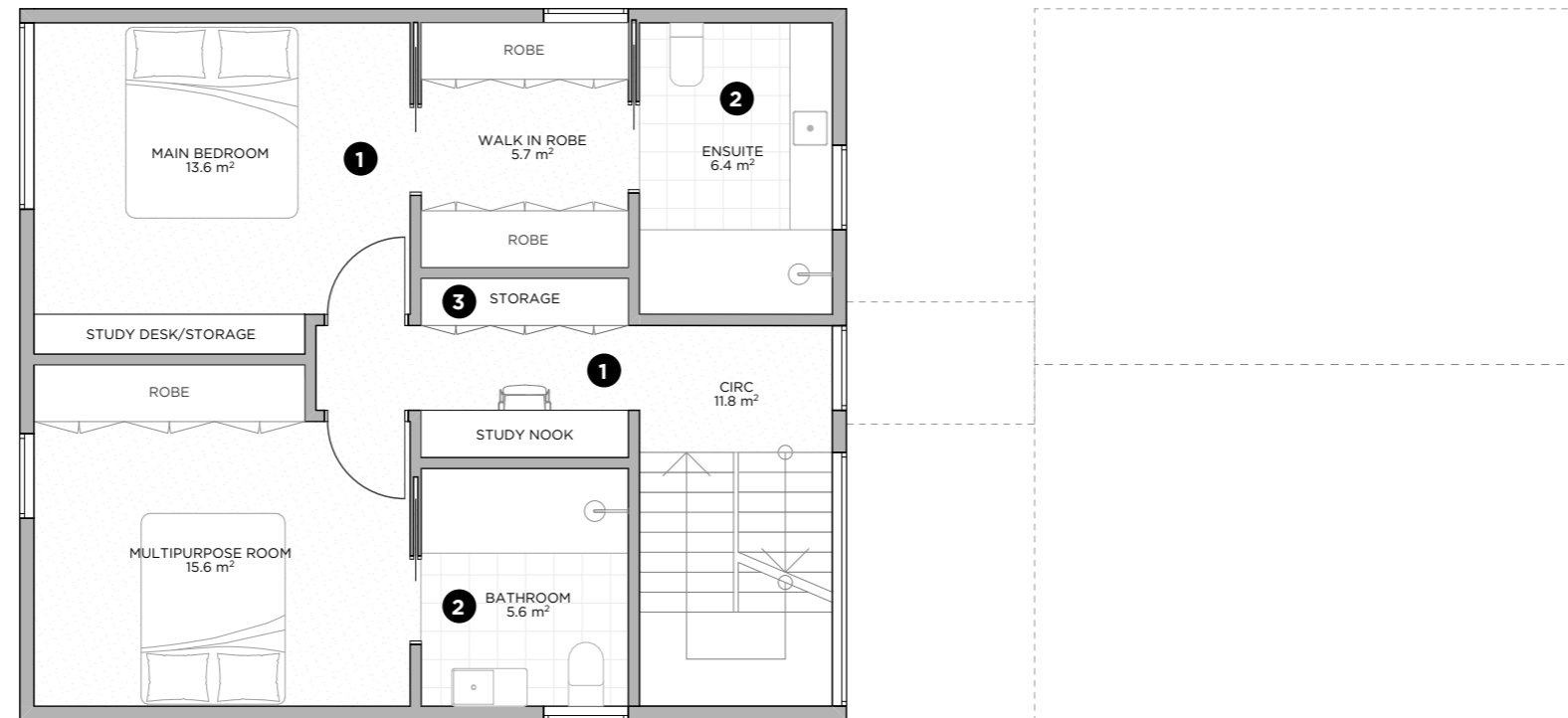


9 Timber joinery to bathrooms

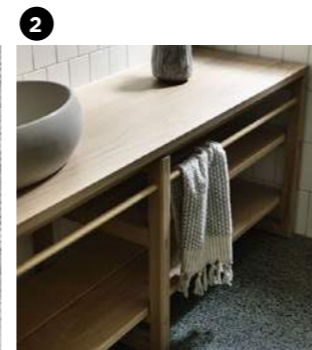
Up and Down - First Floor Plan

Double storey - 3 bed

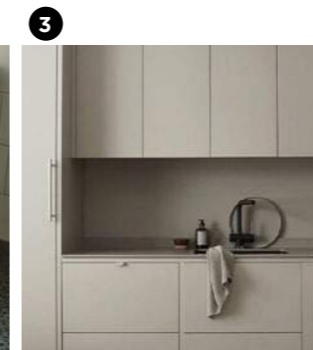
Total area - 180m²



Carpet to bedrooms



Timber joinery to bathrooms



Solid colour laminate joinery



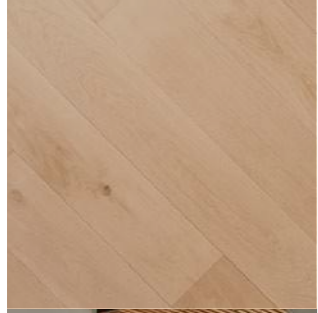
**Up and Down
Big House**

Option 1

Entry Sequence - Option 1



1 Timber facade



2 Timber flooring



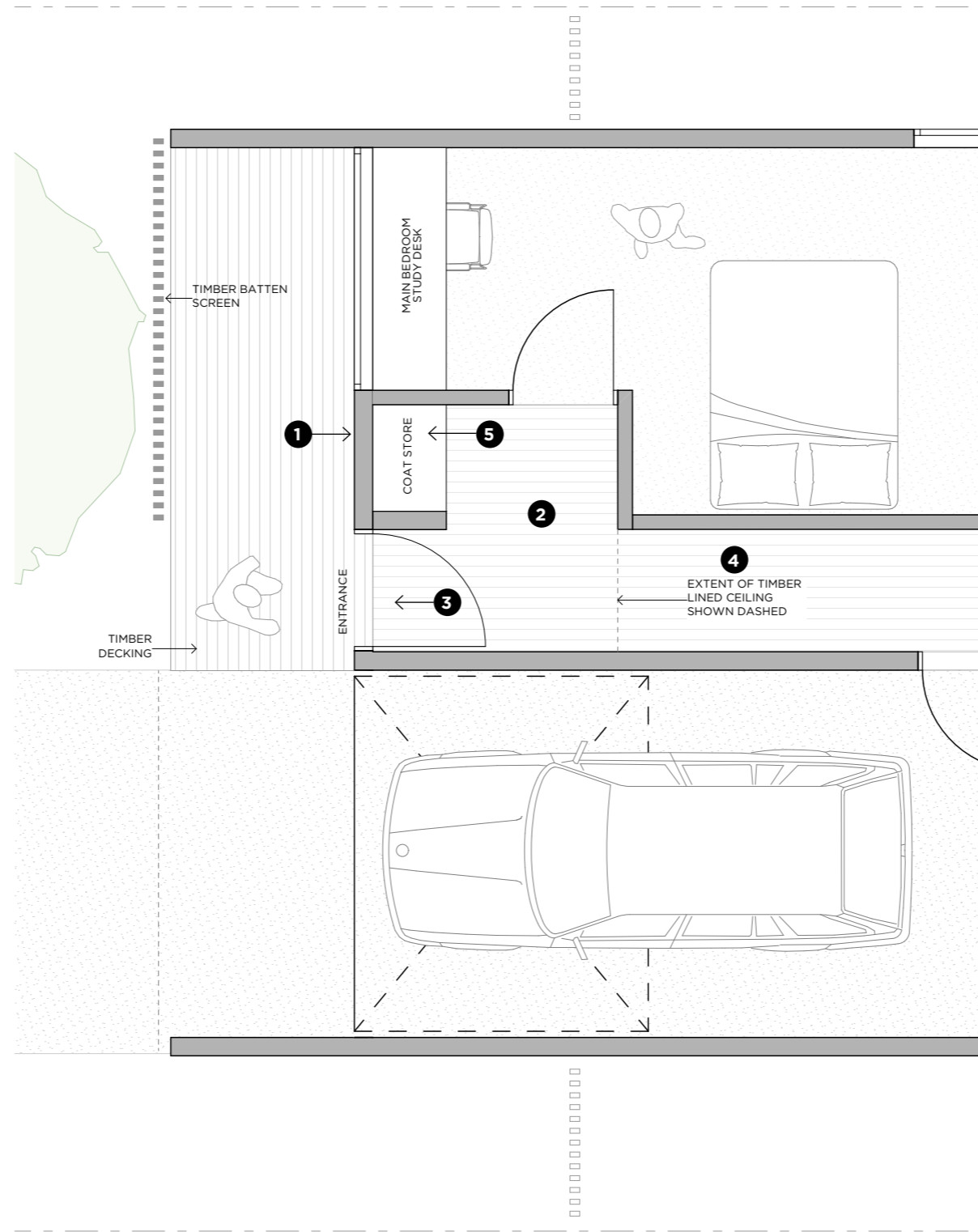
3 Timber entrance door



4 Timber ceiling to entrance



5 Grooved board to coat nook





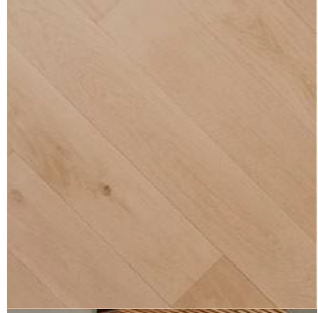
**Up and Down
Big House**

Option 2

Entry Sequence - Option 2



1 Timber facade



2 Timber flooring



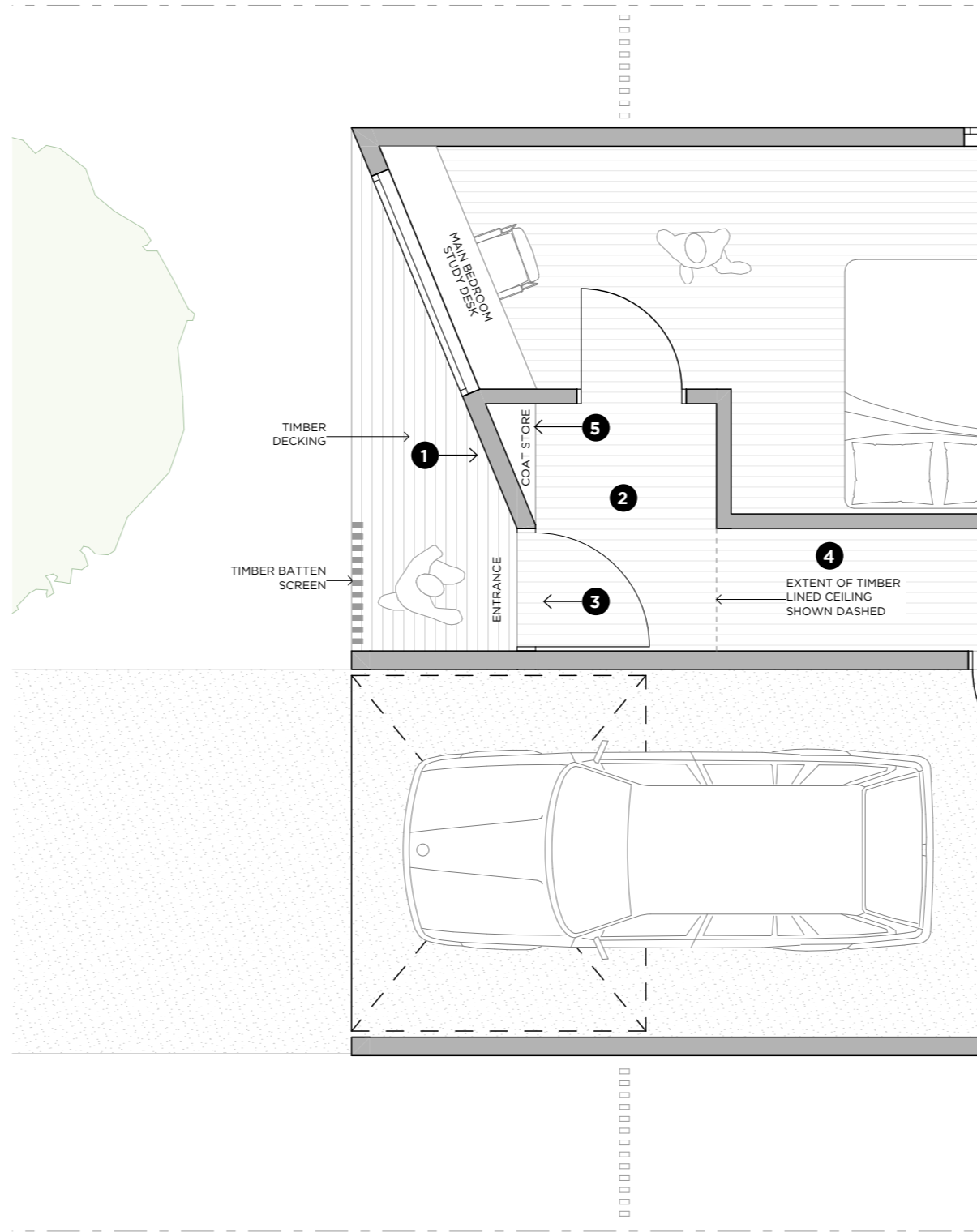
3 Timber entrance door



4 Timber ceiling to entrance



5 Grooved board to coat nook





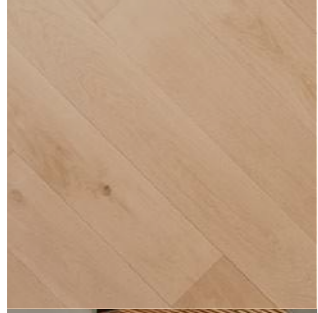
**Up and Down
Big House**

Option 3

Entry Sequence - Option 3



1 Timber facade



2 Timber flooring



3 Timber entrance door



4 Timber ceiling to entrance



5 Grooved board to coat nook

